

TylerIce™



HIGH PERFORMANCE ICE CONTROL



Snow & Ice Team



TylerIce™

COMBAT ICY CONDITIONS SWIFTLY AND EFFECTIVELY

Keeping airports up and running is tough business. Equipment needs to perform when you need it the most. **TylerIce** is the brand that airports across the world trust and rely on.

Our Engineering and Production Team has worked hard to develop and perfect features that airport fleet managers demand. And we take pride in **offering solutions that no one else in the market offers.**

Yes, we are proud of our equipment, but don't take it just from us, **TylerIce De-icers are featured on both the Science and Smithsonian Channels.**



Sourcewell

Awarded Contract

Contract # 111522-AGI

Sourcewell

Awarded Contract

Contract # 062222-AGI

For more information, contact: snowandiceteam@alamo-group.com



AD SERIES

Truck Mounted Runway De-Icers

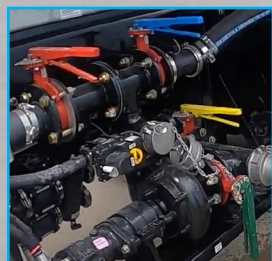
Trusted by passenger and cargo airports across the world



Designed to provide safe and exceptional performance in the harshest of conditions, **TylerIce AD Series** is available a wide range of **tank capacities - 2,000, 4,000, and 5,000 gallons**. Time is of the essence when it comes to managing an ice storm, our units come with **spray arms in 3 widths sized for runways - 50, 75 or 100ft widths**.



Mission Control - Intuitive and user-friendly, our **exclusive IQAN control system and software** makes controlling all aspects of operations an easy job. Extensive training will not be needed to get and up and running. The pre-set application rates are a great place to start while the auto start and stop eliminate the need to hold the blast control button.



Driver's Side Pumping Station - The pump station and valve controls are located near the cab on the driver's side. This makes it **safe and easy-to-access** for loading/unloading liquids. Color coded valves and a mounted operations chart make it simple to perform operations. The load line is located low which is an added safety feature when loading/unloading chemicals.



Heavy-Duty Spray Arms - Built to withstand the rigors of intense winter conditions, our spray arms are the **strongest in the industry**. Constructed of rectangular tubing, these arms are designed to endure heavy usage and exposure to de-icing chemicals, ensuring a long lifespan and reliable performance season after season. Our 50' & 75' arms have a **break-away feature**.



Unrivalled Efficiency - Our De-Icing Truck Spray Arms are engineered to optimize your de-icing operations with an **Auto Stow & Deploy feature**. De-icing materials can be **sprayed in fully closed, partially open and fully opened positions**. Our 50' spray arm has a 3-Section Shut-off while our 75' & 100' spray arms come with a **5-Section Shut-off**.



Versatility at its Best - Featuring advanced technology, our spray arms deliver precise and controlled application of anti-icing & de-icing solutions. Our **"select-a-spray"** system allows you to quickly change from light to heavy applications with out removing nozzles. Precision spray control minimizes waste and maximizes effectiveness, **saving you both time and money**.

TylerIceTM

Sourcewell
Awarded Contract
Contract # 111522-AGI

Sourcewell
Awarded Contract
Contract # 062222-AGI

ALAMO GROUP
Snow & Ice Team

TAD SERIES

Trailer Mounted De-Icers



Designed for smaller airports or runways our mid-sized trailer mounted **TylerIce TAD Series** is available **1000 gallon** poly or **2000 gallon** stainless tank capacities.. Available with **cab-controlled engine and spray functions** our units are equipped with 50' spray arms.

- Integral Pump Station** - 20HP engine with 300GPM centrifugal pump
- Cab-controlled** - Spray arm and engine functions
- Hose Reels** - Manual and electric
- Select-a-Spray** - Nozzle control system allows for quick change-over
- 3-Section Spray Arm Shut-off** - Ability to spray in fully-closed position
- Heavy-Duty Trailer** - Safe to operate with a low center of gravity and power surge brakes

RD SERIES

Truck Mounted Ramp De-Icers



Designed to be operated in tight areas our **TylerIce RD Series** is available in **tank capacities of 1,400 or 2,000 gallons**. . Our units are equipped with **front and/or rear mounted 3-Section spray bars** that can cover up to 36'.

- Pump Station** - allows for loading, off-loading and material transfer
- Pump Capacity** - 300GPM
- Safe & Easy-to-Operate** - our pump station is conveniently located
- Spray Arm Shut-off Valves** - Electronically operated
- Flow Control** - Ground speed based control system
- Cab-Controlled** - Spray arm and engine functions
- Multi-tier Spray Bar** - Allows for wide range of spraying speeds

TylerIce™

Sourcewell
Awarded Contract
Contract # 111522-AGI

Sourcewell
Awarded Contract
Contract # 062222-AGI



Snow & Ice Team



Tylerlce De-icers are featured on both the Science and Smithsonian Channels

FULL LINE OF SNOW & ICE EQUIPMENT FOR MUNICIPALITIES AND AIRPORTS



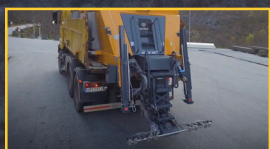
BLUE MAX HIGH SPEED PLOWS



ROLLOVER PLOWS



RAMP PLOWS



EPOKE® SPREADERS



SPREADERS & COMBO BODIES



SNOW BLOWERS



COLD AIR BLOWERS



TURNKEY TRUCKS



LOADER/GRADER ATTACHMENTS



Snow & Ice Team



For more information, contact: snowandiceteam@alamo-group.com